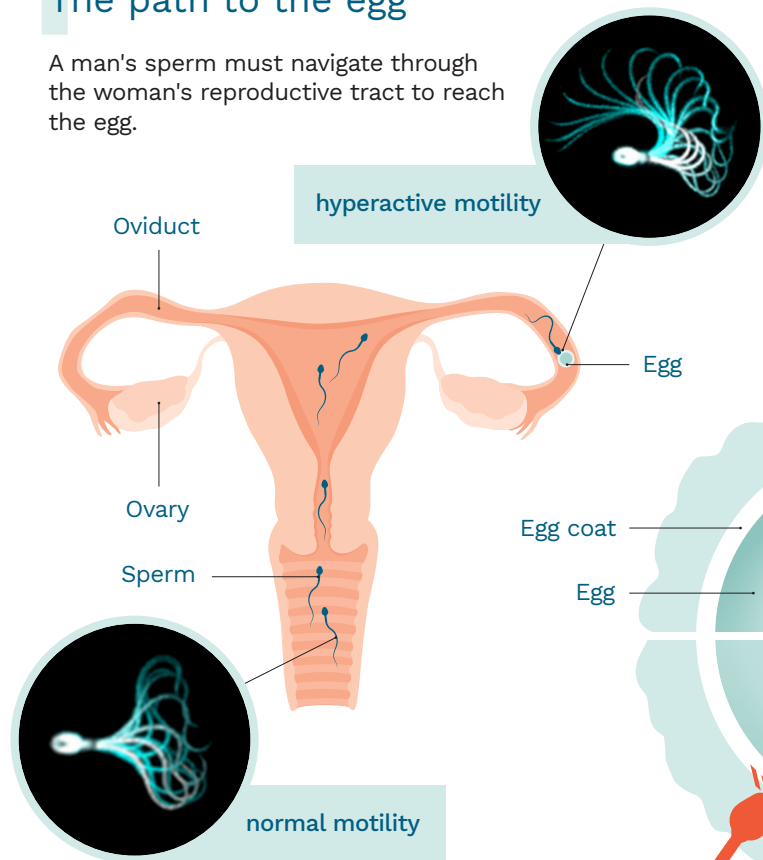


The CatSper-Test

for the early detection of CatSper-related male infertility

1 Sperm navigation: The path to the egg

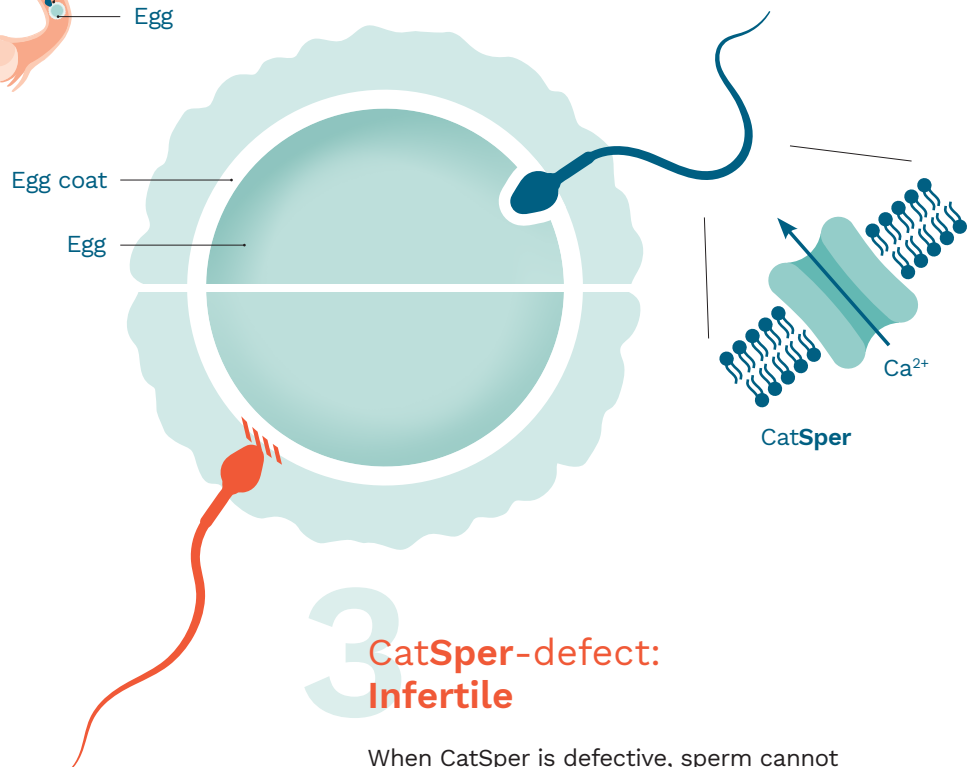
A man's sperm must navigate through the woman's reproductive tract to reach the egg.



2 CatSper-intact: Fertilization

For fertilization, sperm must penetrate the egg's protective coat. To do this, they beat very forcefully. This is known as hyperactive motility.

Hyperactivation is controlled by the sperm-specific protein – CatSper.



3 CatSper-defect: Infertile

When CatSper is defective, sperm cannot penetrate the egg coat and become stuck, preventing natural pregnancy. IUI and IVF treatments will also fail.

4 CatSper-defect: Undetectable

Men with CatSper-defective sperm are infertile, but this disorder goes undetected in routine semen analysis, leading to unexplained male infertility.

5 CatSper-Test

The CatSper-Test can detect CatSper-related infertility early, enabling evidence-based therapy selection for couples with unexplained infertility.

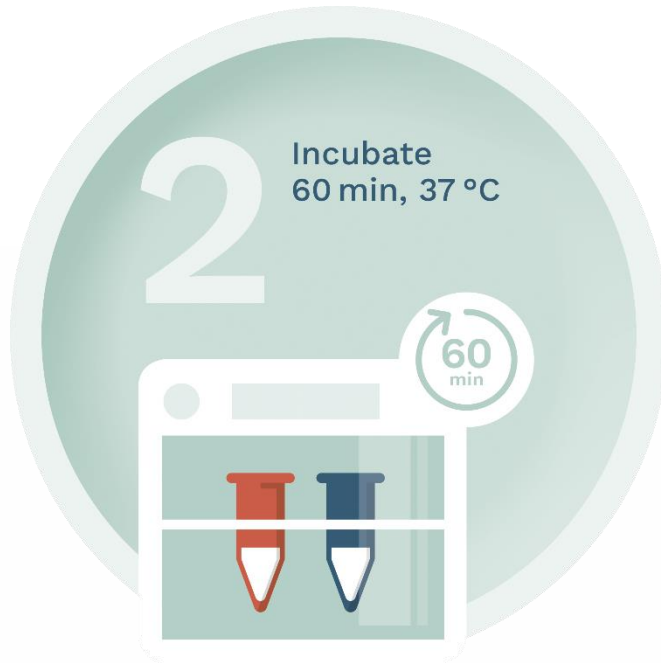
1

Add ejaculate
to the CatFlux
Solutions
20µl each



2

Incubate
60 min, 37 °C



3

Compare
motility

